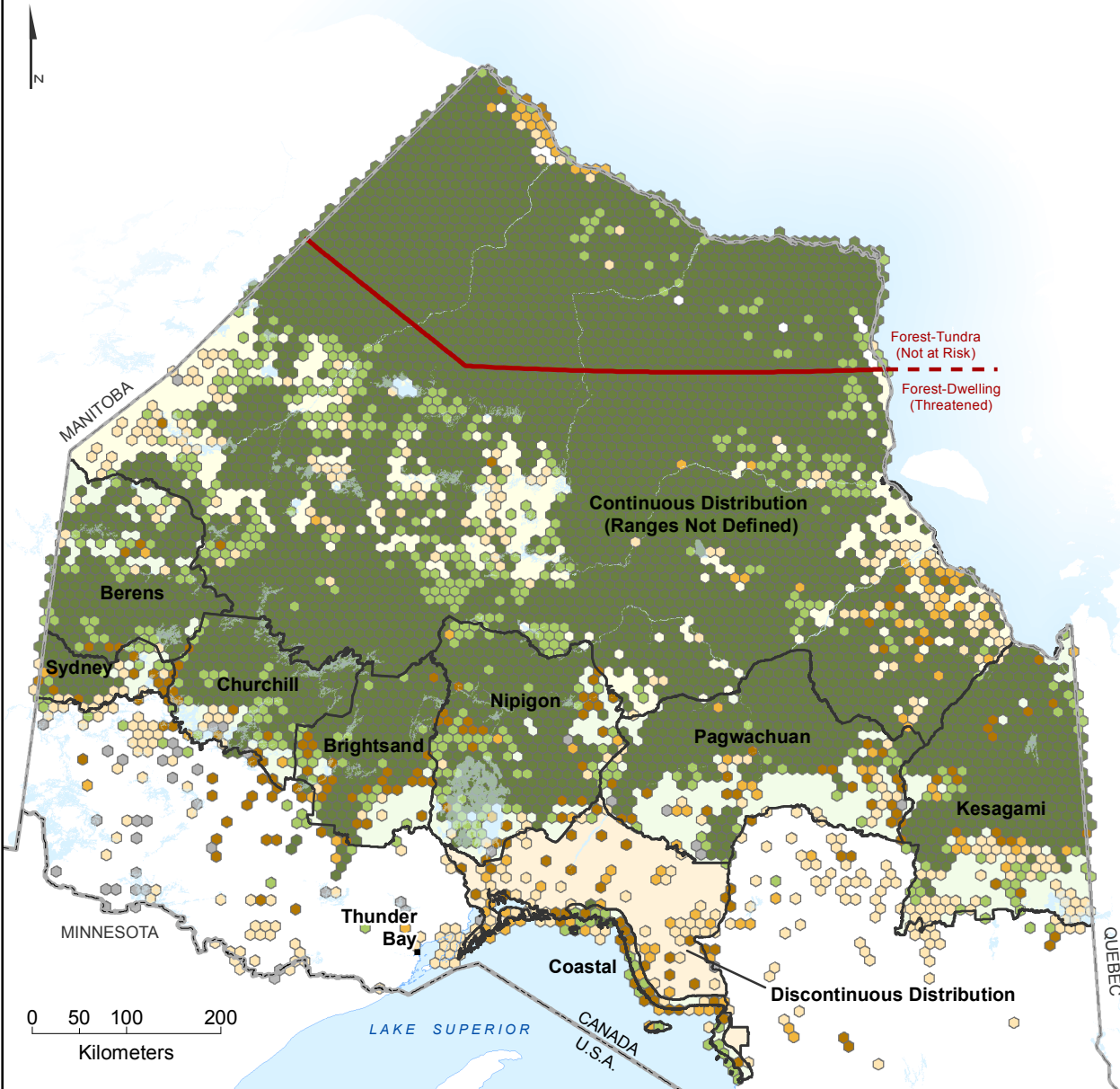


Ontario has researched historical documentation of woodland caribou and assembled recent survey information. These efforts have been summarized here in the form of occupancy, which is represented by the most recent record of caribou within 100 km² hexagon grid cells. Temporal information like this aids biologists in tracking changes in occurrence and connectivity of populations, as well as monitoring recovery within the continuous and discontinuous caribou distributions.

Occupancy, as it is represented here, does not portray the abundance of caribou across the landscape, nor does it show the quality or quantity of caribou habitat. Additionally, the absence of an observation does not mean caribou are not or were not present.



Caribou Occupancy by Decade

- 2010 - present
- 2000 - 2009
- 1990 - 1999
- 1980 - 1989
- Pre 1980s
- Unknown

Geographic Features

- Community
- Caribou Ecotype Boundary
- International Boundary
- Waterbody
- Provincial Boundary
- Continuous Distribution (ranges defined)
- Continuous Distribution (ranges not defined)
- Discontinuous Distribution



Disclaimer:
This map is illustrative only. This map should not be relied on as a precise indicator of routes or locations, nor as a guide to navigation. The Ontario Ministry of Natural Resources shall not be liable in any way for the use of, or reliance upon, this map or any information on this map.

Sources:
Thematic Data: OMNR
Base Data: LIO (Land Information Ontario)
Projection: Lambert Conformal Conic
Datum: North American Datum 1983

© Queen's Printer for Ontario, 2013
Published in May 2013

Map Reference: COCBU0007